

aretè L



Il nitore di una
geometria classica
dal sapore
contemporaneo: una
maniglia che parla di
sostanzata semplicità.

*The clarity of classical
geometry with a
contemporary mood:
a handle that speaks
of sophisticated
simplicity.*

aretè L

design:
Mauro Ronchi



AL12
OGH

Ottone forgiato
Forged brass



AB
Bronzato
Antique bronze



OGH
Bronzo satinato opaco
Matt satin bronze



OC
Power cromo lucido
Power polished chrome



PCS
Power cromo satinato
Power satin chrome

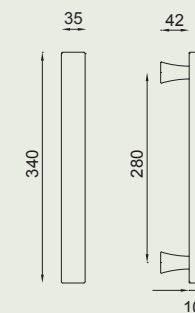
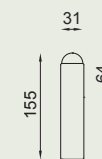
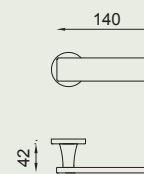


PGS*
PVD grafite satinato
Satin graphite PVD



PVX*
PVD inox
Steel PVD

* **su ordinazione / on demand**



VIS AL12

VIS AL22V

AL27

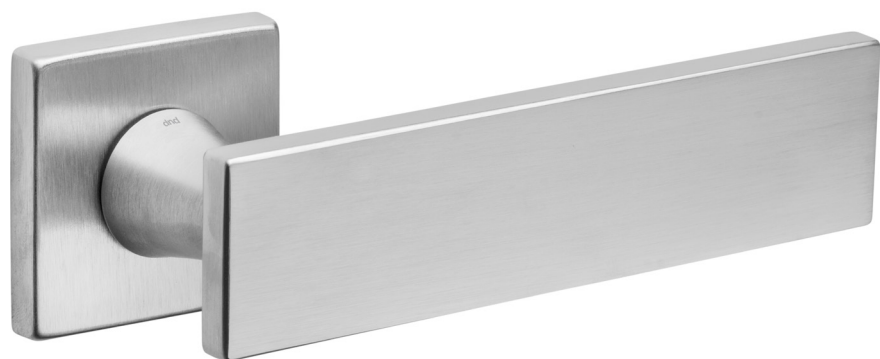
FINE AL40

LOCK AL22TS

52 AL16

aretè L 02

design:
Mauro Ronchi



AL14
PCS

Ottone forgiato
Forged brass



AB
Bronzato
Antique bronze



OGH
Bronzo satinato opaco
Matt satin bronze



OC
Power cromo lucido
Power polished chrome



PCS
Power cromo satinato
Power satin chrome



PGS*
PVD grafite satinato
Satin graphite PVD



PVX*
PVD inox
Steel PVD

* **su ordinazione / on demand**

